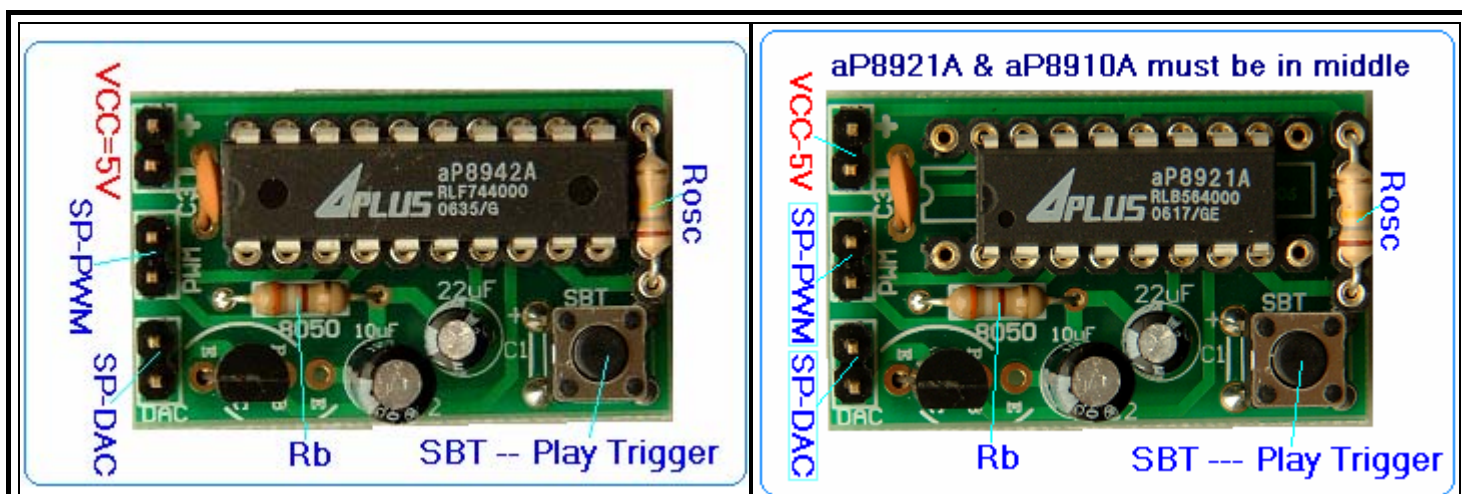


DB20A --- VOICE OTP DEMO BOARD USER MANUAL

For aP8942A (42") / aP8921A (21") / aP8910A (10")

	Durations	PHRASE		TG - pin	PDIP	SOP	DIE	VCC
		Key mode	CPU mode					
aP8942A	42"	32	32	8	20	20	YES	2.6 ~ 5.0V
aP8921A	21"	12	12	4	16	16	YES	2.6 ~ 5.0V
aP8910A	10"	12	12	4	16	16	YES	2.6 ~ 5.0V



1. Part no. : **DB20A**
2. PCB SIZE : 36 x 22 mm
3. PCB NO. : SZ6006
4. VCC = 2.6V ~ 5.0V
5. **DAC / PWM**
6. SBT key : one key sequential trigger
7. aP8921A & aP8910A must be in middle

Sampling rate	Rosc	Sampling rate	Rosc
5.4 K Hz	400K	10.3 K Hz	200K
5.9 K Hz	370K	11.0 K Hz	180K
6.3 K Hz	350K	11.9 K Hz	170K
6.5 K Hz	330K	13.8 K Hz	150K
7.0 K Hz	300K	16.5 K Hz	120K
7.6 K Hz	280K	19.3 K Hz	100K
8.5 K Hz	250K	20.5 K Hz	91K
9.5 K Hz	220K	22.4 K Hz	82K

APLUS INTEGRATED CIRCUITS INC.

TEL : 886-2-2782-9266

FAX : 886-2-2782-9255

<http://www.aplusinc.com.tw>

E-mail: sales@aplusinc.com.tw