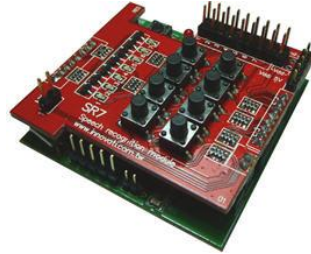


SR7 - Speech Recognition Module



Description

Innovati's SR7 is Speech Recognition module. It can be used to send voice command to the Basic Commander.

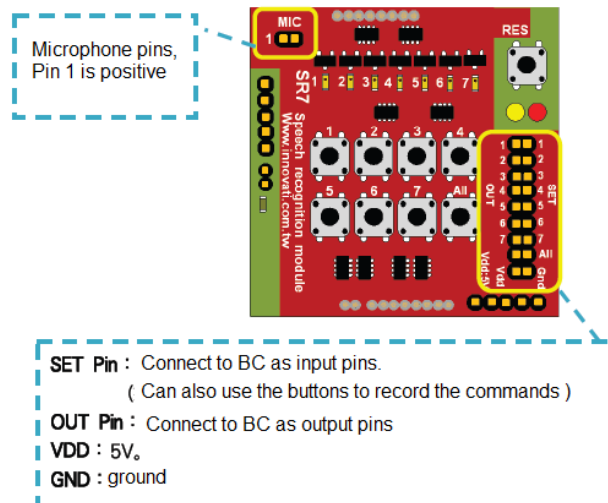
Application

- Control devices with voice command instead of switches.

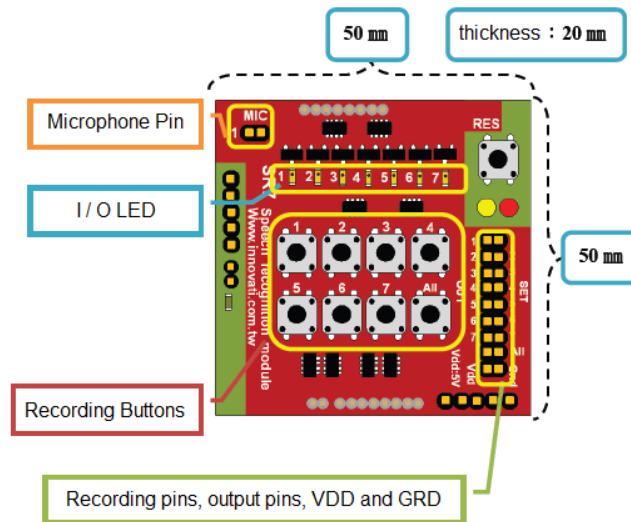
Features:

- Up to 7 voice commands
- Easy voice training

Setup:



Specification



Training:

Step 1:

After all the cables are connected, turn on the power.

Step 2:

If it is first time recording, press the All button, and start recording.

During the recording, the LED output 1 will be ON to indicate it is recording.

The LED lights will be ON sequentially from 1-7 for each command

If it is not the first time recording, press the corresponding button to record the command you want.

Step 3:

After the recording is done, say the command at the MIC.

The corresponding button of that command will be ON.

The corresponding pin will be set as LOW.

NOTE:

You can use HIGH command to set the pins in the Step 2. If there is no command, the pin is set as LOW.

Example code:

```
Dim bPortA As Byte
Sub Main()
    Do
        bPortA = Readport0 'get the input signal from PortA and save to bPortA
        Debug CSRXY(1, 1), %BIN(bPortA), CLREOL
        Select bPortA 'check bPortA value and execute the command
            Case &B01111111 : Debug CSRXY(1, 2), "No Command", CLREOL
            Case &B01111110 : Debug CSRXY(1, 2), "Command = 1", CLREOL : Pause 3000
            Case &B01111101 : Debug CSRXY(1, 2), "Command = 2", CLREOL : Pause 3000
            Case &B01111011 : Debug CSRXY(1, 2), "Command = 3", CLREOL : Pause 3000
            Case &B01110111 : Debug CSRXY(1, 2), "Command = 4", CLREOL : Pause 3000
            Case &B01101111 : Debug CSRXY(1, 2), "Command = 5", CLREOL : Pause 3000
            Case &B01011111 : Debug CSRXY(1, 2), "Command = 6", CLREOL : Pause 3000
            Case &B00111111 : Debug CSRXY(1, 2), "Command = 7", CLREOL : Pause 3000
        End Select
    Loop
End Sub
```